

**MADE IN  
GERMANY**  
SINCE 1888



## INNOVATIVE SOLUTIONS FROM GRÖMO

Ingeniously simple thanks to intelligent details



★ SENDS RAIN DOWN THE DRAIN



# GRÖMO SENDS RAIN, DOWN THE DRAIN!

**With high-quality products, innovative solutions and simple assembly, GRÖMO makes roofing work faster, more cost-effective and more successful. Quality, innovation, simplicity – our core values are embodied by every one of our roof draining components. The products bear the GRÖMO plumber star as a sign of their high quality.**

## **Intelligent details make your work easier**

Simplicity is evidenced in the swift, easy and safe assembly of our tailor-made components. Ingenious product details and highly functional precision work make sure of this – a minimal change in the geometry, an additional groove, an extra spring or a prepared opening. All this benefits you: Meaning you need less manpower, less equipment, and fewer hand movements. Put simply: We save you time and expense.

## **Innovations for your requirements**

We are in constant contact with our customers and continually develop our products based on the requirements of plumbers and roofers, optimising them in terms of quality, functionality and application. Our best known example: From nearly 100 years ago, when we invented the gutter outlet. We have been continually improving it ever since. Today, it is the leading product of its kind, with unique application benefits.

## **Reach for the stars**

On the following pages, we will show you a few selected roof drainage components – our star products when it comes to simplicity. We will explain the outstanding details and show you how they can benefit you.

**INSERT ELBOW.**

**TURN ELBOW.**

**ELBOW HAS LASTING FIT.**

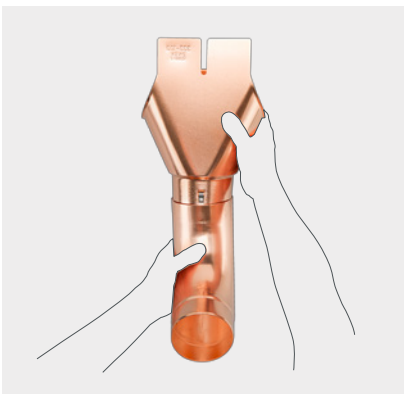


- Zinc
- Pre-weathered quartz zinc
- Copper
- Galvanized steel
- Testa di Moro
- UGINOX Patina K41
- UGINOX Top 304
- Aluminum



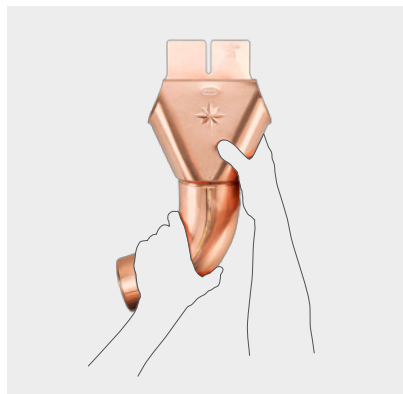
## THE GRÖMO GUTTER OUTLET. THE ORIGINAL

Any elbow can be plugged on the GRÖMO gutter outlet, fast and feather-light. No wiring or riveting. Thanks to the spring clip technology, the elbow is simply turned in the desired direction and stops reliably in any position. The GRÖMO gutter outlet fits in all current drainpipe systems and can be detached with just a turn.



### Spring clips replace tools

Just insert elbow. The spring clip technology offsets tolerances in the elbow diameter.



### Turn, done – it stays!

No wiring or riveting. Just turn elbow in the desired direction. Holds reliably in any position.

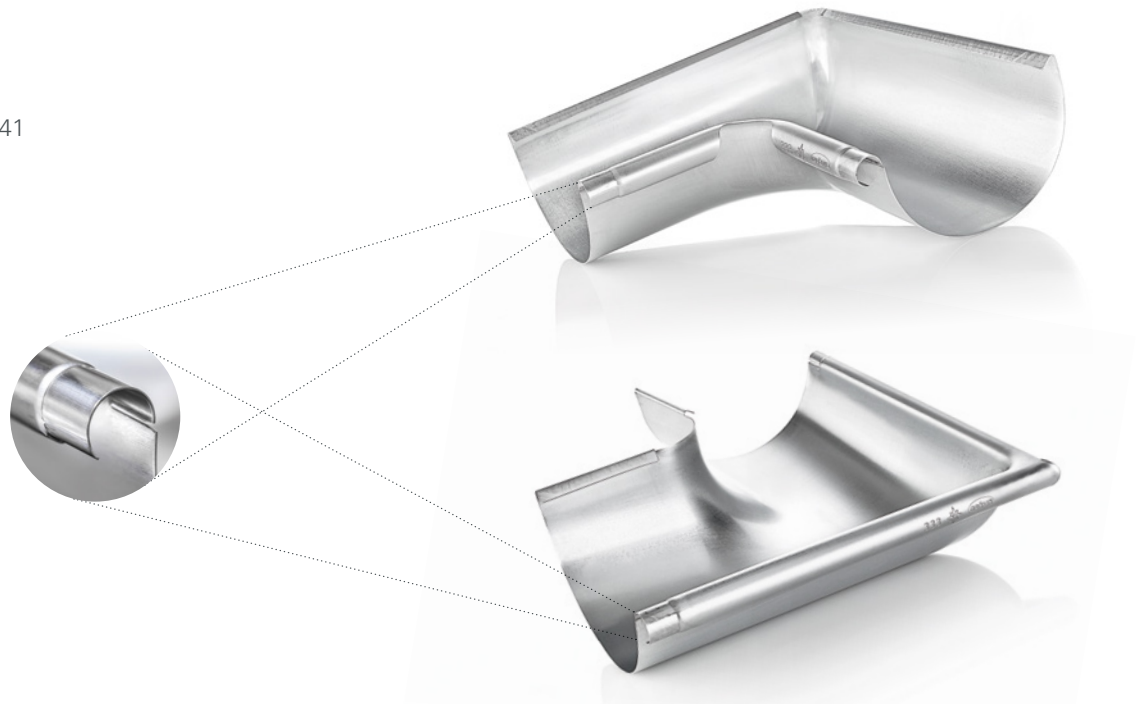


**SIMPLE.**

**PLUGGING.**

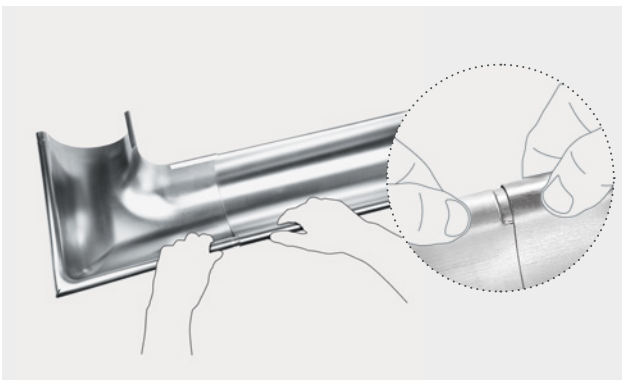
**READY. ✓**

- Zinc
- Pre-weathered quartz zinc
- Copper
- Galvanized steel
- Testa di Moro
- UGINOX Patina K41
- UGINOX Top 304
- Aluminum



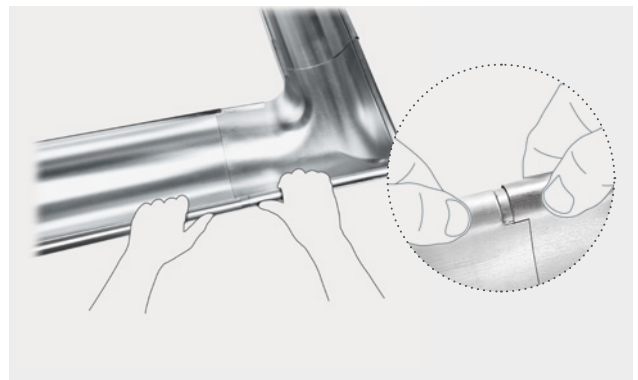
## THE GUTTER CORNER

The GRÖMO gutter corner is a functional masterpiece. It relieves the craft workers' work to an enormous extent and makes laborious screwing in unnecessary. Because thanks to the recessed bead with mounting aid, the gutter corner can be easily plugged in.



### Easy for one side

In order to divert rainwater perfectly through the roof gutter in the direction of flow, the gutter corner is pushed under the gutter on one side by inserted the corner's recessed bead into the gutter bead. The slot can be ignored for this.



### Easy for the other side

On the other side, the gutter is pushed under the gutter corner by inserted the gutter bead into the insertion slot of the recessed corner bead.

A close-up photograph of a metal joint, possibly a pipe or valve, showing a smooth, polished surface. The lighting is warm and directional, creating highlights and shadows that emphasize the curvature and texture of the metal. A dark, semi-transparent rectangular overlay is positioned on the left side of the image, containing three lines of white text. To the right of the third line of text is a small orange checkmark.

**ALWAYS FITS.**

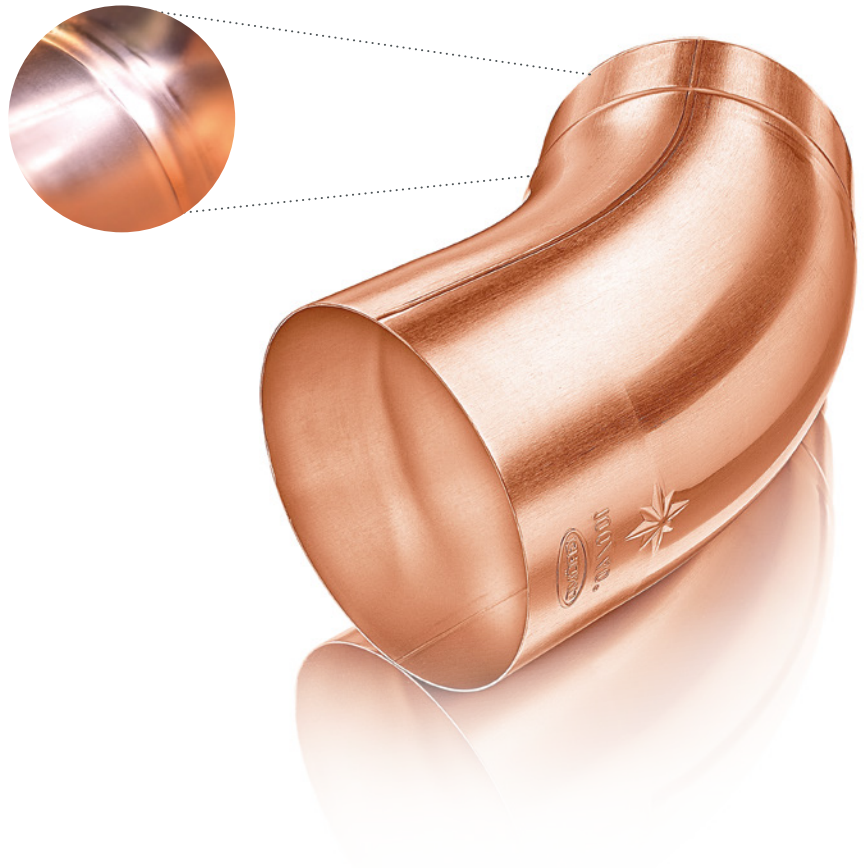
**UNIVERSAL FIT.**

**WITHOUT FLARING.**



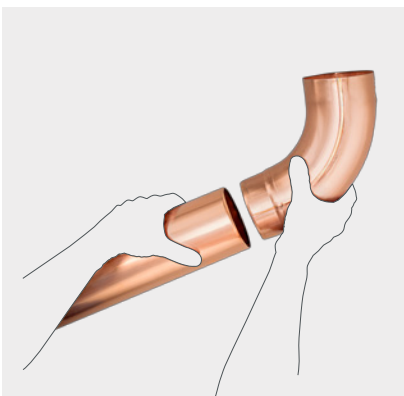


- Zinc
- Pre-weathered quartz zinc
- Copper
- Galvanized steel
- Testa di Moro
- UGINOX Patina K41
- UGINOX Top 304
- Aluminum

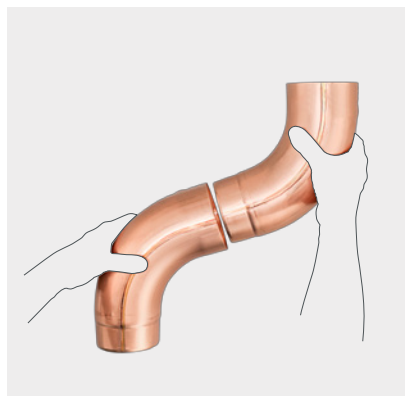


## THE CONICAL PIPE ELBOW

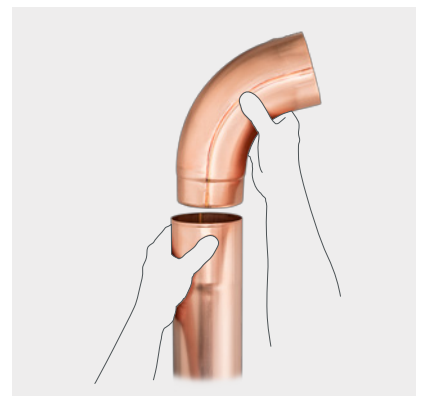
The indent makes the difference. And costly pipe flaring is unnecessary. Thanks to the indent, the elbow can easily be inserted into any cut pipe, with or without socket. It doesn't get more flexible than that. And the plug connection is secure.



**Quickly inserted thanks to the indent**  
Without flaring! Just stick pipe elbow with indent into cut-to-length pipe – done.



**Fits always ...**  
Elbow to elbow ....



**... everywhere**  
... and elbow to pipe with socket.



**MODERN.**

**EYE-CATCHING.**

**RELIABLE. ✓**

Flat roof hopper:

- Zinc
- Copper
- UGINOX Patina K41

Kubic flat roof hopper:

- Zinc
- UGINOX Patina K41



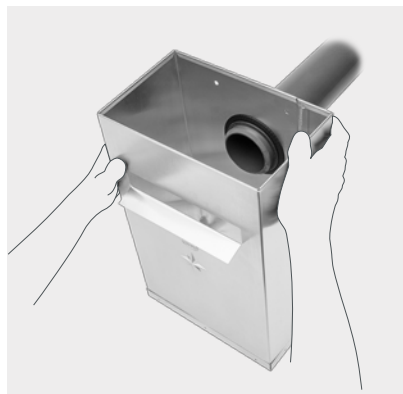
## THE FLAT ROOF HOPPERS

The pre-punched inflow opening (NG 75/NG 100/NG 110) and pre-mounted seal make for easy installation. Where it previously had to be tediously cut and adjusted, the hopper can now easily be inserted through the prepared inflow opening on the pipe and mounted directly on the wall.



### Open for quick assembly

Pre-punched intake opening and pre-mounted seal make it easy: Just stick the hopper on the intake pipe – and it stays.



### On the wall and done

The hopper can be mounted directly on the wall according to alignment.

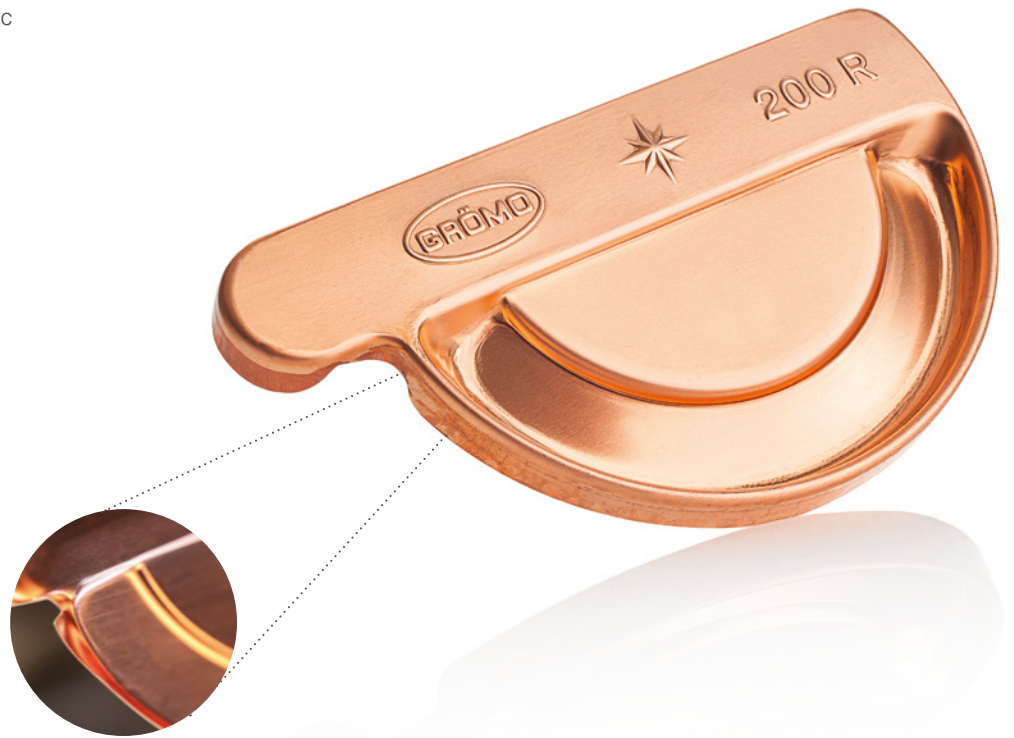
**PLUG IN.**

**SOLDER.**

**DONE.**



- Zinc
- Pre-weathered quartz zinc
- Copper
- UGINOX Patina K41
- Aluminum

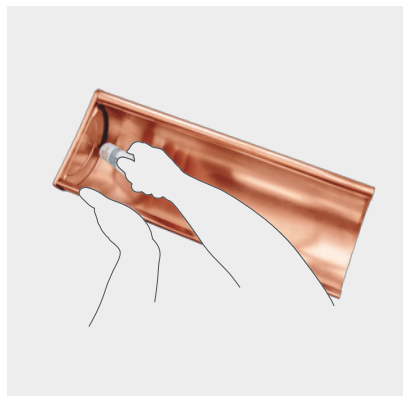


## THE PLUG-IN GUTTER END CAP

With the GRÖMO plug-in gutter end cap, it's fast, cleaner, and easier. Thanks to the insertion slot, it can be easily inserted on the roof gutter and stays there by itself. Your hands are free for soldering or adhering. The insertion groove prevents jumping out – as can happen with other soldering gutter end caps.



**The insertion groove makes it easy**  
Just stick it on the roof gutter – and it stays by itself thanks to the insertion groove.



**Free hands for soldering or adhering**  
No jumping out as can happen with other gutter end caps. Solder or adhere – done.

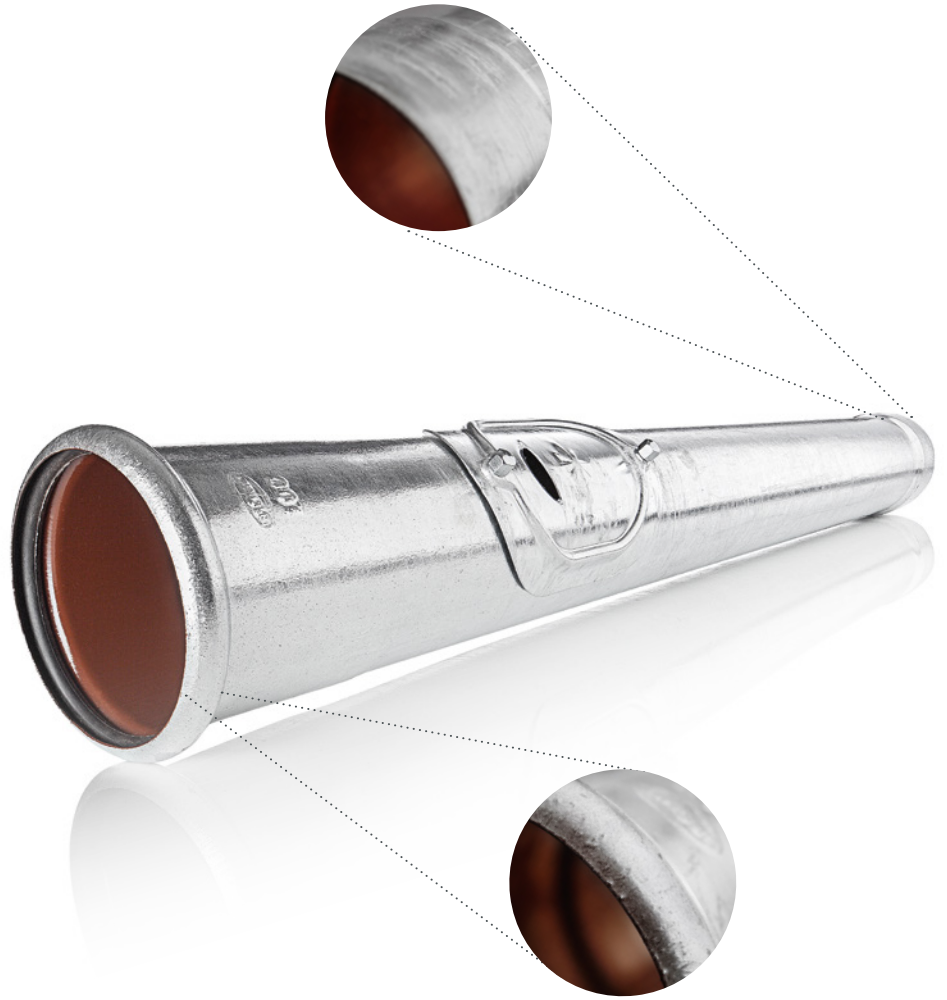
**ROBUST.**

**FITS PERFECTLY.**

**LASTS A LONG TIME.**



● Galvanized steel



## THE GRÖMO STANDPIPE

The GRÖMO standpipe ensures fluid transitions. As a fixed component in roof drainage, the standpipe provides protection against damage in areas prone to impact. Particularly smart: The perfectly fitting transition from rainwater downpipe to standpipe makes the standpipe cap unnecessary. The built-in seal provides support and keeps the two pipes perfectly centered. There's more space to move for cleaning thanks to the standpipe's large cleaning opening (optional).



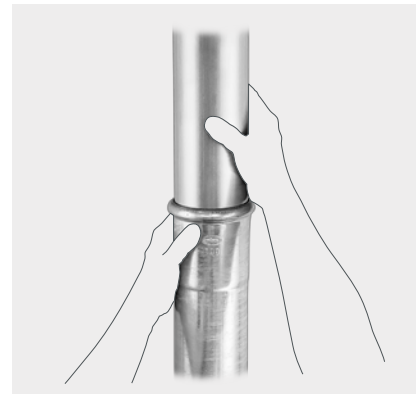
### No need for connector

Insert standpipe into the main sewer system. Fits directly in all common sewer pipes, no connector necessary.



### Just insert

Insert rainwater downpipe into the standpipe's long-sleeve socket.



### Mounts quickly without standpipe cap

No standpipe cap is needed thanks to the perfectly fitting transition.

