

A close-up photograph of a metal joint, likely a pipe or tube connection, showing a smooth, universal fit without any flaring. The lighting is warm and focused on the joint, highlighting the texture of the metal.

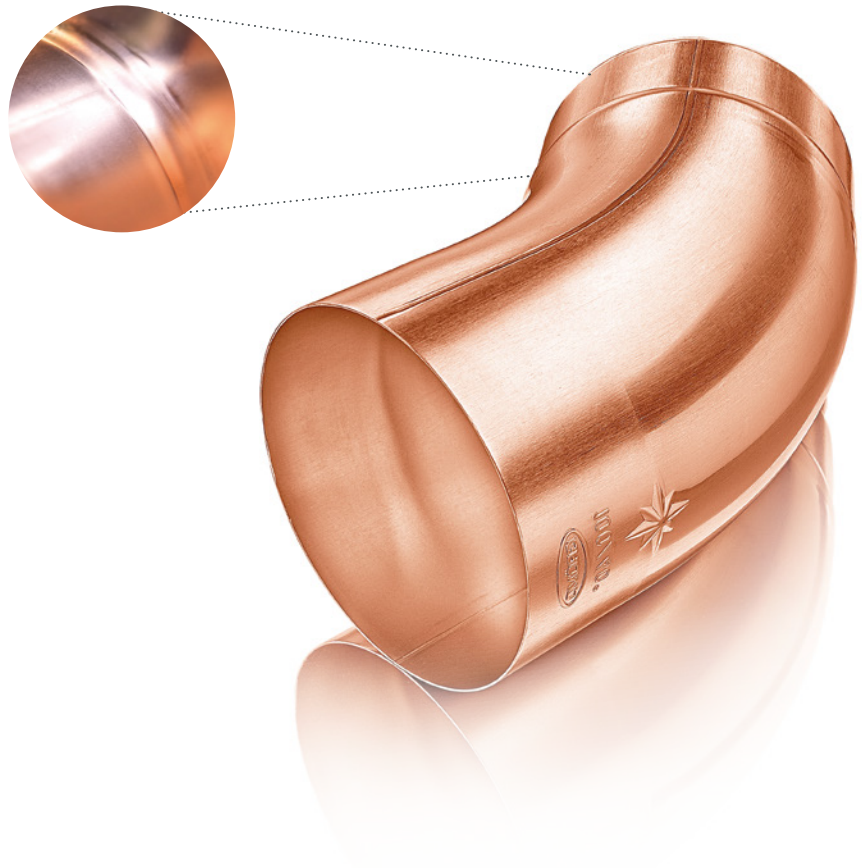
**ALWAYS FITS.**

**UNIVERSAL FIT.**

**WITHOUT FLARING.**

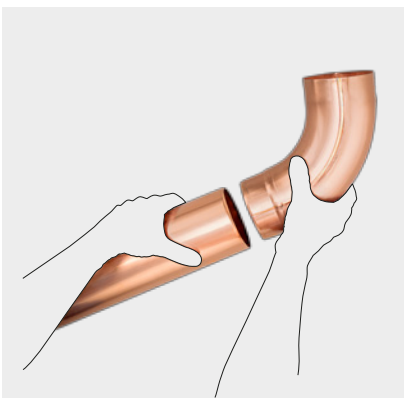


- Zinc
- Pre-weathered quartz zinc
- Copper
- Galvanized steel
- Testa di Moro
- UGINOX Patina K41
- UGINOX Top 304
- Aluminum

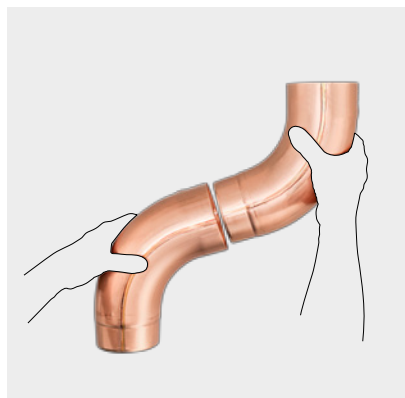


## THE CONICAL PIPE ELBOW

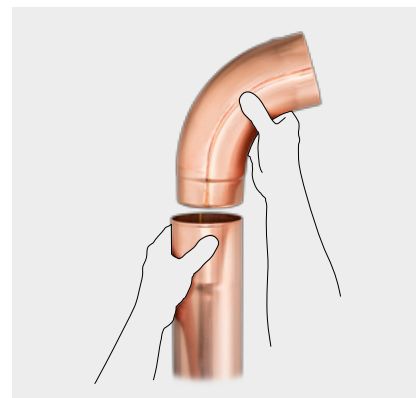
The indent makes the difference. And costly pipe flaring is unnecessary. Thanks to the indent, the elbow can easily be inserted into any cut pipe, with or without socket. It doesn't get more flexible than that. And the plug connection is secure.



**Quickly inserted thanks to the indent**  
Without flaring! Just stick pipe elbow with indent into cut-to-length pipe – done.



**Fits always ...**  
Elbow to elbow ...



**... everywhere**  
... and elbow to pipe with socket.